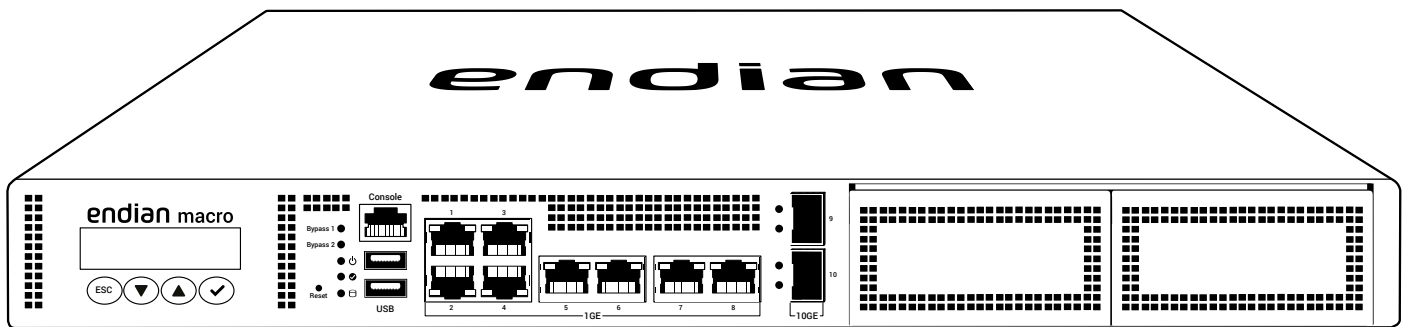
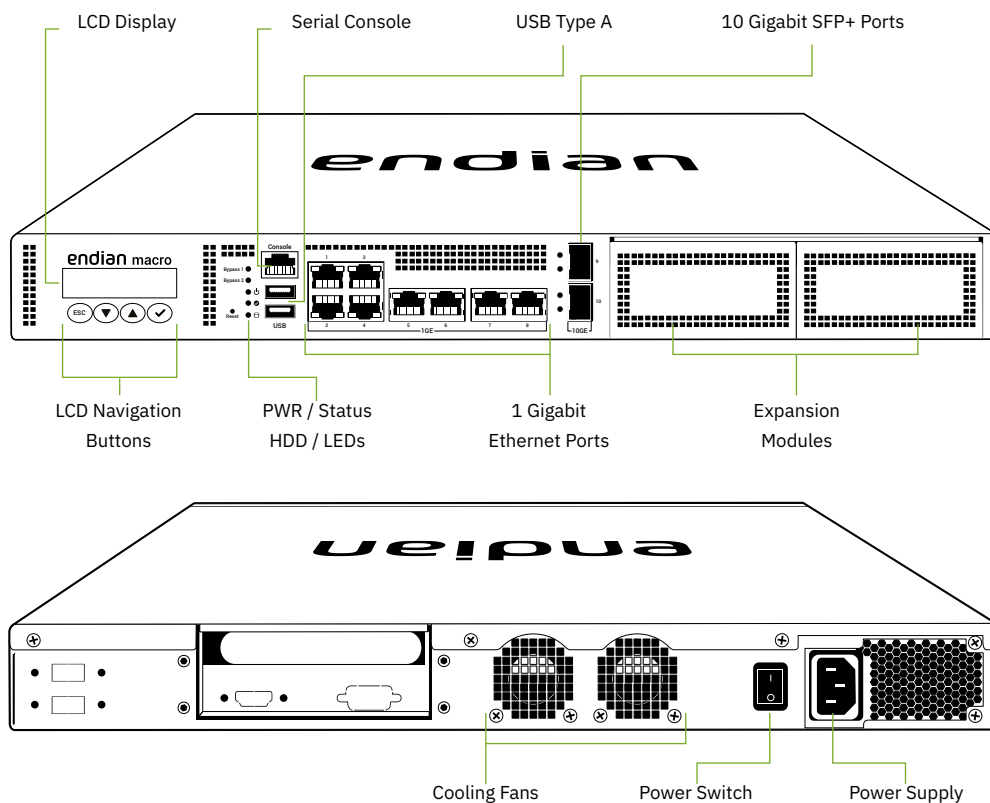


## QuickStart Guide

### Endian Macro





## What You Have and What You Need

With your Endian appliance box you receive:

- ✓ Endian Appliance
- ✓ AC power cord
- ✓ 1 Ethernet cable
- ✓ 1 console cable

To install your Endian appliance and protect your network you need:

- ✓ Power connection
- ✓ Network connection

## Installation



**A DHCP server is running on Ethernet port 1 of your appliance. If you already have a DHCP server in your local network make sure to connect your computer directly to Ethernet port 1, go through the installation procedure and connect the appliance to your local network only after having disabled the DHCP server.**

1. Place your Endian appliance on a steady surface.
2. Connect your computer to Ethernet port 1 of the Endian appliance.
3. Connect the last Ethernet port of your Endian appliance to the uplink. The appliance will automatically try to connect to the Internet via DHCP once turned on.
4. If you are using a mobile broadband connection, plug in your USB key instead.
5. Connect the AC power cord to the AC power socket and push the power button.

**The Endian appliance turns ON.**

## Web Interface

1. After booting the appliance your PC will automatically get an IP address from the Endian appliance.



If your computer is not set up to configure its IP address through DHCP you will need to configure your PC's Ethernet interface manually. In that case configure your interface with an IP address belonging to the 192.168.0.0/24 subnet that is different from 192.168.0.15 (which is the IP address of the Endian appliance).

2. Open your Internet browser (e.g. Mozilla Firefox) and go to address **192.168.0.15**

The system will redirect you to <https://192.168.0.15:10443/> and the Configuration Wizard will start, and you need to select your language and accept the License.

## Choose Your Configuration Mode

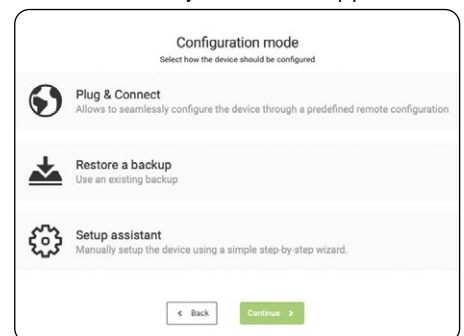
You have 3 choices:

1. **Plug & Connect:** if you have an Endian Switchboard this is the easiest way to connect and activate your Endian appliance



You (or someone from your company) must initially configure your device on the Switchboard in order to utilize the Plug & Connect feature (for more info please go to [help.endian.com](https://help.endian.com) and look for the “The Plug And Connect Autoregistration Procedure” article)

2. **Restore a Backup:** choose this mode if you have any existing backup to restore.
3. **Setup Assistant:** if you want to configure your appliance manually with the configuration wizard, choose this mode and follow the steps



## Endian Network Account

The Configuration Assistant will ask you for an Endian Network account, needed for your Endian Network subscription and keep your appliance always up-to-date with the latest features and security updates.

### A. You already have an Endian Network account

1. When the system asks you if you have an Endian Network account choose “yes” and go to the next step.
2. Now fill in the form using your data and the activation code.

### B. You do not have an Endian Network account

1. When the system asks you if you have an Endian Network account choose “no” and go to the next step.
2. Click on the “Endian Network account” link and insert the activation code on the back of this Quick Start.
3. Fill in the registration form and create your account.
4. Close the registration window and go to the next step.
5. Now fill in the form using your data and the activation code.

**Your Endian appliance is now ready!**

## Cautions and Warnings

### Environmental specifications

Ambient operating temperature: 0°C to 40°C

- **Rack Mount Instructions** - The following or similar rack-mount instructions are included with the installation instructions: For some Endian appliances accessories for rack mounting are available.
- **Elevated Operating Ambient** - If installed in a closed or multi-unit rack assembly, the operating ambient temperature of the rack environment may be greater than room ambient. Therefore, consideration should be given to installing the equipment in an environment compatible with the maximum ambient temperature (T<sub>ma</sub>) specified by the manufacturer.
- **Reduced Air Flow** - Installation of the equipment in a rack should be such that the amount of air flow required for safe operation of the equipment is not compromised.
- **Mechanical Loading** - Mounting of the equipment in the rack should be such that a hazardous condition is not achieved due to uneven mechanical loading.
- **Circuit Overloading** - Consideration should be given to the connection of the equipment to the supply circuit and the effect that overloading of the circuits might have on overcurrent protection and supply wiring. Appropriate consideration of equipment nameplate ratings should be used when addressing this concern.
- **Reliable Earthing** - Reliable earthing of rack-mounted equipment should be maintained. Particular attention should be given to supply connections other than direct connections to the branch circuit (e.g. use of power strips).

Refer to specific Product Model Data Sheet for Environmental Specifications (Operating Temperature, Storage Temperature and Humidity)

## Safety

Please read the following safety instructions carefully. It is advised that you keep this manual for future references.

1. All cautions and warnings on the device should be noted.
2. All cables and adapters supplied by Endian are certified and in accordance with the material safety laws and regulations of the country of sale. Do not use any cables or adapters not supplied by Endian to prevent system malfunction or fires.
3. Make sure the power source matches the power rating of the device.
4. Position the power cord so that people cannot step on it. Do not place anything over the power cord.
5. Always completely disconnect the power before working on the system's hardware.
6. No connections should be made when the system is powered as a sudden rush of power may damage sensitive electronic components.
7. If the device is not to be used for a long time, disconnect it from the power supply to avoid damage by transient over-voltage.
8. Always disconnect this device from any AC supply before cleaning. While cleaning, use a damp cloth instead of liquid or spray detergents.
9. Make sure the device is installed near a power outlet and is easily accessible.
10. Keep this device away from humidity.
11. Place the device on a solid surface during installation to prevent falls
12. Do not cover the openings on the device to ensure optimal heat dissipation.
13. Watch out for high temperatures when the system is running.
14. Do not touch the heat sink or heat spreader when the system is running
15. Never pour any liquid into the openings. This could cause fire or electric shock.
16. As most electronic components are sensitive to static electrical charge, be sure to ground yourself to prevent static charge when installing the internal components. Use a grounding wrist strap and contain all electronic components in any static-shielded containers.
17. If any of the following situations arises, please contact our service personnel:
  - Damaged power cord or plug
  - Liquid intrusion to the device
  - Exposure to moisture
  - Device is not working as expected or in a manner as described in this manual
  - The device is dropped or damaged
  - Any obvious signs of damage displayed on the device

## Caution:

There is a danger of explosion if the battery is incorrectly replaced. Replace only with the same or equivalent type recommended by the manufacturer. Dispose of used batteries according to the manufacturer's instructions and your local government's recycling or disposal directives.

## Attention:

Il y a un risque d'explosion si la batterie est remplacée de façon incorrecte. Ne la remplacer qu'avec le même modèle ou équivalent recommandé par le constructeur. Recycler les batteries usées en accord avec les instructions du fabricant et les directives gouvernementales de recyclage.

**Warning:** Equipment intended for installation in Restricted Access Location.

## Regulatory Notices

### European Conformity (CE) - EU

This is a A product. In a domestic environment, this product may cause radio interference, in which case the user may be required to take adequate measures.

This equipment should be installed and operated with minimum distance 20cm between the radiator & your body.

### Simplified EU Declaration of Conformity

This declaration is only valid for Endian products (including combinations of software, firmware and hardware) provided by Endian or Endian's authorized partners to the end-customer directly for use within the EU or countries that have implemented the EU Directives and/or spectrum regulation. Any Endian products not obtained directly from Endian or Endian's authorized partners may not comply with EU Directives and Endian makes no assurances for such products.

**Deutsch** Dieses Produkt entspricht der Richtlinie 2014/30/EU

**English** This product is in compliance with Directive 2014/53/EU

**Italiano** Questo prodotto è conforme alla Direttiva 2014/53/EU.

**Português** Este produto está em conformidade com a Diretiva 2014/53/UE

**Ελληνική** Το προϊόν αυτό συμμορφώνεται με την Οδηγία 2014/53/ΕΕ.

### Federal Communication Commission (FCC) – USA

This device complies with Part 15 of FCC Rules. Operation is subject to the following two conditions:

1. this device may not cause harmful interference, and
2. this device must accept any interference received; including interference that may cause undesired operation.

This equipment has been tested and found to comply with the limits for a Class B digital device, pursuant to Part 15 of the FCC Rules. These limits are designed to provide reasonable protection against harmful interference when the equipment is operated in a commercial environment. This equipment generates, uses, and can radiate radio frequency energy, and if it is not installed and used in accordance with the instruction manual, it may cause harmful interference to radio communications. Operation of this equipment in a residential area is likely to cause harmful interference in which case the user will be required to correct the interference at his own expense.

**Warning:** Any changes or modifications to this unit not expressly approved by the party responsible for compliance could void the user's authority to operate the equipment.

### Industry Canada Equipment Standard for Digital Equipment (ICES) – Canada

CAN ICES-003 (A) / NMB-003 (A)

This digital apparatus does not exceed the Class A limits for radio noise emissions from digital apparatus set out in the Radio Interference Regulations of the Canadian Department of Communications. Cet appareil numérique n'émet pas de bruits radioélectriques dépassant les limites applicables aux appareils numériques de la classe A prescrites dans le Règlement sur le brouillage radioélectrique édicté par le ministère des Communications du Canada.